

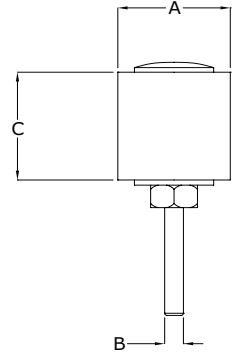


CLESCO
"The Abrasive Hardware Specialist"

Sanding Drums



- For mounting abrasive sanding sleeves
- Sleeves are secured in place by controlled expansion of the solid rubber drum spindle
- Rubber provides cushion backing for a smooth, even finish



Standard Screw Lock - with Shank

- Rubber expansion is controlled by tightening/loosening the slotted screw

(B) Shank Dia.	(A) Drum Dia.	(C) Drum Width			
		1/2"	3/4"	1"	1-1/2"
3/32	1/4	SD-004008-332SL			
3/32	3/8	SD-006008-332SL			
3/32	1/2	SD-008008-332SL			
3/32	3/4	SD-012008-332SL			
1/8	1/4	SD-004008-02SL	SD-004012-02SL	SD-004016-02SL	SD-004024-02SL
1/8	3/8	SD-006008-02SL	SD-006012-02SL	SD-006016-02SL	
1/8	1/2	SD-008008-02SL			
1/8	3/4	SD-012008-02SL			
1/4	1/4	SD-004008-04SL		SD-004016-04SL	
1/4	3/8	SD-006008-04SL		SD-006016-04SL	SD-006024-04SL
1/4	1/2	SD-008008-04SL			

Standard Nut Lock – with Shank

- Rubber expansion is controlled by tightening/loosening the hex nut
- The rubber spindle is seated directly on the drive mandrel (arbor)



(B) Shank Dia.	(A) Drum Dia.	(C) Drum Width					
		1/2"	3/4"	1"	1-1/2"	2"	3"
1/8	3/8	SD-006008-02NL					
1/8	1/2	SD-008008-02NL	SD-008012-02NL				
1/8	3/4	SD-012008-02NL	SD-012012-02NL				
1/4	1/2	SD-008008-04NL	SD-008012-04NL	SD-008016-04NL	SD-008024-04NL	SD-008032-04NL	SD-008048-04NL
1/4	5/8	SD-010008-04NL		SD-010016-04NL	SD-010024-04NL	SD-010032-04NL	SD-010048-04NL
1/4	3/4	SD-012008-04NL	SD-012012-04NL	SD-012016-04NL	SD-012024-04NL	SD-012032-04NL	SD-012048-04NL
1/4	1	SD-016008-04NL	SD-016012-04NL	SD-016016-04NL	SD-016024-04NL	SD-016032-04NL	SD-016048-04NL
1/4	1 1/4	SD-020008-04NL	SD-020012-04NL	SD-020016-04NL	SD-020024-04NL	SD-020032-04NL	SD-020048-04NL
1/4	1 1/2	SD-024008-04NL		SD-024016-04NL	SD-024024-04NL	SD-024032-04NL	SD-024048-04NL
1/4	1 3/4					SD-028032-04NL	
1/4	2			SD-032016-04NL	SD-032024-04NL	SD-032032-04NL	SD-032048-04NL
3/8	2						SD-032048-06NL
1/4	2 1/4						SD-036048-04NL
3/8	2 1/4						SD-036048-06NL
1/4	3			SD-048016-04NL		SD-048032-04NL	SD-048048-04NL
3/8	3			SD-048016-06NL		SD-048032-06NL	SD-048048-06NL
1/2	3						SD-048048-08NL

*Maximum RPM's for Clesco Sanding Drums can be found on page 19.

www.climaxmetal.com
Phone: 1-800-542-6552 Fax: 1-800-860-5553

Quick Lock – with Shank



CLESCO

"The Abrasive Hardware Specialist"

- Rubber expansion for these drums is controlled by simply twisting the rubber spindle by hand, no tools necessary
- Turn spindle clockwise to expand rubber for quick-lock, and counter clockwise to loosen for quick-change
- The rubber spindle is seated directly on the drive mandrel (arbor)



(B) Shank Dia.	(A) Drum Dia.	(C) Drum Width					
		1/2"	3/4"	1"	1-1/2"	2"	3"
1/4	1/2	SD-008008-04QL	SD-008012-04QL	SD-008016-04QL	SD-008024-04QL	SD-008032-04QL	SD-008048-04QL
1/4	5/8	SD-010008-04QL		SD-010016-04QL	SD-010024-04QL		
1/4	3/4	SD-012008-04QL	SD-012012-04QL	SD-012016-04QL	SD-012024-04QL	SD-012032-04QL	SD-012048-04QL
1/4	1	SD-016008-04QL	SD-016012-04QL	SD-016016-04QL	SD-016024-04QL	SD-016032-04QL	SD-016048-04QL
1/4	1 1/4			SD-020016-04QL		SD-020032-04QL	
1/4	1 1/2			SD-024016-04QL	SD-024024-04QL	SD-024032-04QL	SD-024048-04QL
1/4	1 3/4					SD-028032-04QL	
1/4	2			SD-032016-04QL	SD-032024-04QL	SD-032032-04QL	SD-032048-04QL
1/4	2 1/4					SD-036032-04QL	SD-036048-04QL
1/4	3					SD-048032-04QL	SD-048048-04QL
3/8	1/2						SD-008048-06QL
3/8	1						SD-016048-06QL
3/8	1 1/2						SD-024048-06QL
3/8	3						SD-048048-06QL

Shaft Mount Sanding Drums

- Rubber expansion is controlled by tightening/loosening the hex nut
- Drums for mounting on threaded shafts have a matching internal threaded bore
- Drums for mounting on smooth round shafts are secured to the shaft with two socket setscrews
- Drums for a 1/2" smooth round shaft can also be converted for use in a drill press with a 1/2" chuck capacity by using a shaft adapter
- Ideal for motors, grinders, flex shafts & bench mandrels



Drum Dia.	Bore	Drum Width		
		1"	2"	3"
3	1/2	SD-048016-08MD	SD-048032-08MD	SD-048048-08MD
3	5/8			SD-048048-10MD
3	3/4			SD-048048-12MD

Convertible Sanding Drums



Catalog #	Description
SD048048-08MP4	3" X 3" Drum with 1/2" bore- with shaft adapter
SD048048-08MDP	3" X 3" Drum with 1/2" bore- with shaft adapter and 80A sleeve

Threaded Shaft Sanding Drums

Drum Dia.	Bore	Drum Width 3"
3	1/2-20RH	SD-048048-12FD
3	5/8-11RH	SD-048048-58FD

*Maximum RPM's for Clesco Sanding Drums can be found on page 19.

www.climaxmetal.com

Phone: 1-800-542-6552 Fax: 1-800-860-5553