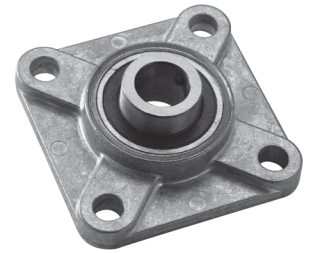


Ball Bearing, Die-Cast Housing, Rigid Type (4 Bolt)

Well suited for applications requiring strong load support in limited mounting area. Solid zinc die-cast housing in non-corrosive and lightweight and securely retains bearing by pressing the lip 360 degrees over the outer race. Includes 2 set screws.

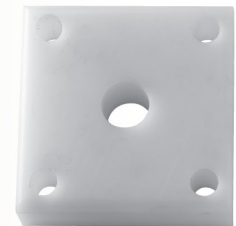


F4DC-BL - Series

Part No.	Bore Dia. (in.)	Load Capacity		A	B	C	D	E	F	Wt. Lbs.
		Dynamic (Lbs.)	Static (Lbs.)							
F4DC-BL-050	1/2	2152	1075	3	1 13/16	2 1/8	3/8	3/8	1 1/32	0.6
F4DC-BL-062	5/8	2152	1075	3	1 13/16	2 1/8	3/8	3/8	1 1/32	0.7
F4DC-BL-075	3/4	2877	1479	3 3/8	2 1/8	2 1/2	3/8	7/16	1 1/8	0.9
F4DC-BL-100	1	3153	1768	3 3/4	2 5/16	2 3/4	7/16	7/16	1 1/4	1.2

UHMW-PE BEARING, SOLID-RIGID TYPE (4 BOLT)

Entire unit is UHMW-PE. USDA and FDA approved. -60° to 180° F temperature range. For wash down applications in wet or harsh environments or where sanitary conditions are a factor. Self-lubricating bearings resist corrosion, high impact and abrasion. Interchangeable with most metal units.



F4UH-UH - Series

Part No.	Bore Dia. (in.)	Load Capacity	A	B	C	D	E	F	Wt. Lbs.
F4UH-UH-062	5/8	Max. PV 3,000*	3	--	2 1/8	7/16	--	1 1/4	0.6
F4UH-UH-075	3/4	Max. PV 3,000*	3 3/8	--	2 1/2	7/16	--	1 1/4	0.6
F4UH-UH-100	1	Max. PV 3,000*	3 3/4	--	2 3/4	7/16	--	1 1/4	0.6

UHMW-PE BEARING, SOLID-RIGID TYPE (2 BOLT)

Entire unit is UHMW-PE. USDA and FDA approved. -60° to 180° F temperature range. For wash down applications in wet or harsh environments or where sanitary conditions are a factor. Self-lubricating bearings resist corrosion, high impact and abrasion. Interchangeable with most metal units.



F2UH-UH - Series

Part No.	Bore Dia. (in.)	Load Capacity	A	B	C	D	E	F	Wt. Lbs.
F2UH-UH-062	5/8	Max. PV 3,000*	4 7/16	2 1/2	3 9/16	7/16	--	1 1/2	0.5
F2UH-UH-075	3/4	Max. PV 3,000*	4 7/16	2 1/2	3 9/16	7/16	--	1 1/2	0.5
F2UH-UH-100	1	Max. PV 3,000*	4 15/16	2 3/4	3 7/8	7/16	--	1 1/2	0.5

* To calculate the PV Factor see formula on page 2.

BRONZE SLEEVE BEARINGS

Self-oiling, ideal for motors, pulleys, replacements, repair jobs, bore reducers, etc. Material is SAE 841. Maximum PV:50,000 Temp. range -5° to 220° F



Part Number	I.D.	O.D.	Length
BSB-040512	1/4	5/16	3/4
BSB-040608	1/4	3/8	1/2
BSB-040616	1/4	3/8	1
BSB-060808	3/8	1/2	1/2
BSB-060816	3/8	1/2	1
BSB-081010	1/2	5/8	5/8
BSB-081018	1/2	5/8	1 1/8
BSB-081118	1/2	11/16	1 1/8
BSB-081218	1/2	3/4	1 1/8
BSB-101216	5/8	3/4	1
BSB-101218	5/8	3/4	1 1/8
BSB-121630	3/4	1	1 7/8

UHMW-PE SLEEVE BEARINGS

UHMW-PE provides durability & low friction. Self-lubricating ideal for wet or harsh environments or where wash-down is required for applications involving slow rotating or linear motion. USDA/FDA approved. Maximum PV:3000 Temperature range -60° to 180° F.



Part Number	I.D.	O.D.	Length
USB-040608	1/4	3/8	1/2
USB-060808	3/8	1/2	1/2
USB-081010	1/2	5/8	5/8
USB-081016	1/2	5/8	1
USB-081216	1/2	3/4	1
USB-101212	5/8	3/4	3/4
USB-121616	3/4	1	1
USB-162016	1	1 1/4	1